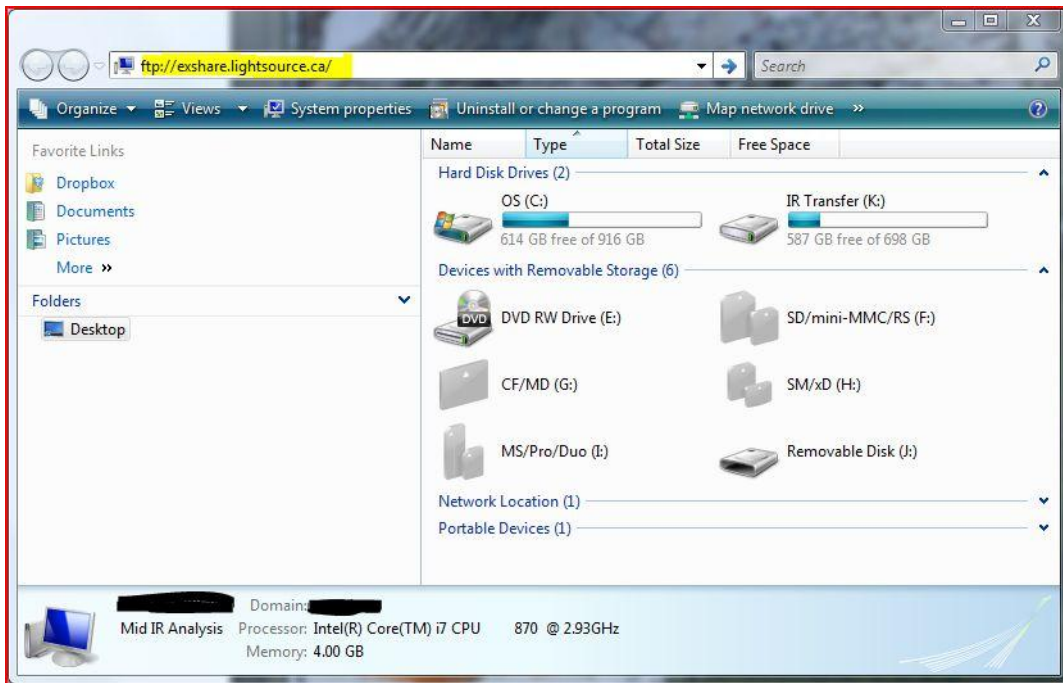


## Canadian Light Source – Data Access Procedure using FTP

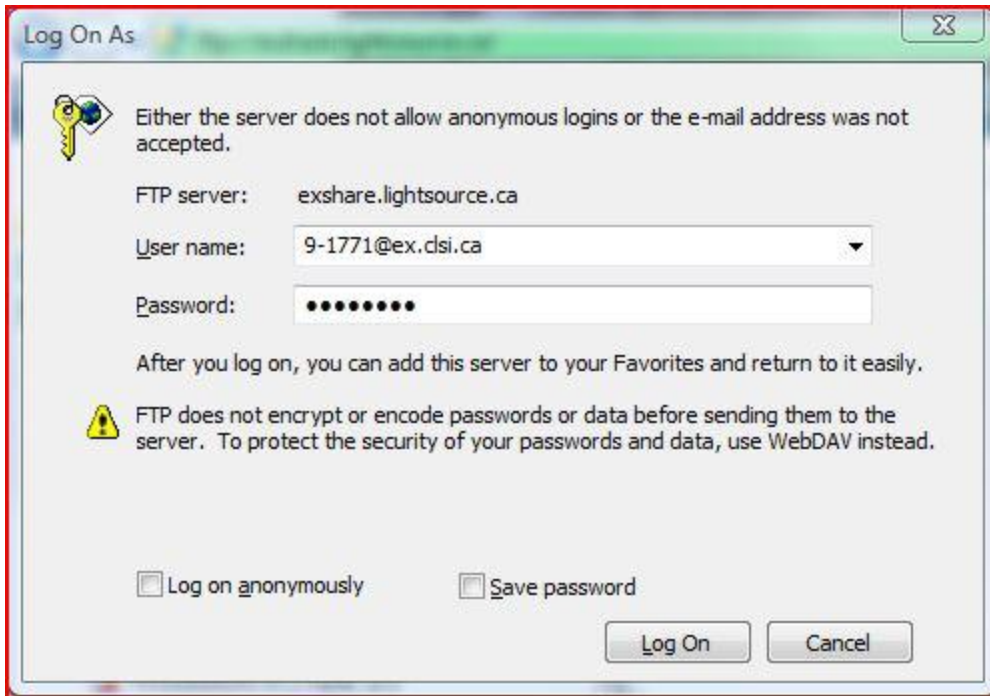
During your beamtime you will have logged in with your permit/experiment number (e.g. **9-1771**) as your username, and saved your data on a CLS storage server. This server can be accessed externally by using **FTP** (File Transfer Protocol), allowing you to download and delete your data once you have it safely backed up on your local computer. These basic instructions show you how to access your data if you are not familiar with FTP.

### Windows Vista/7:

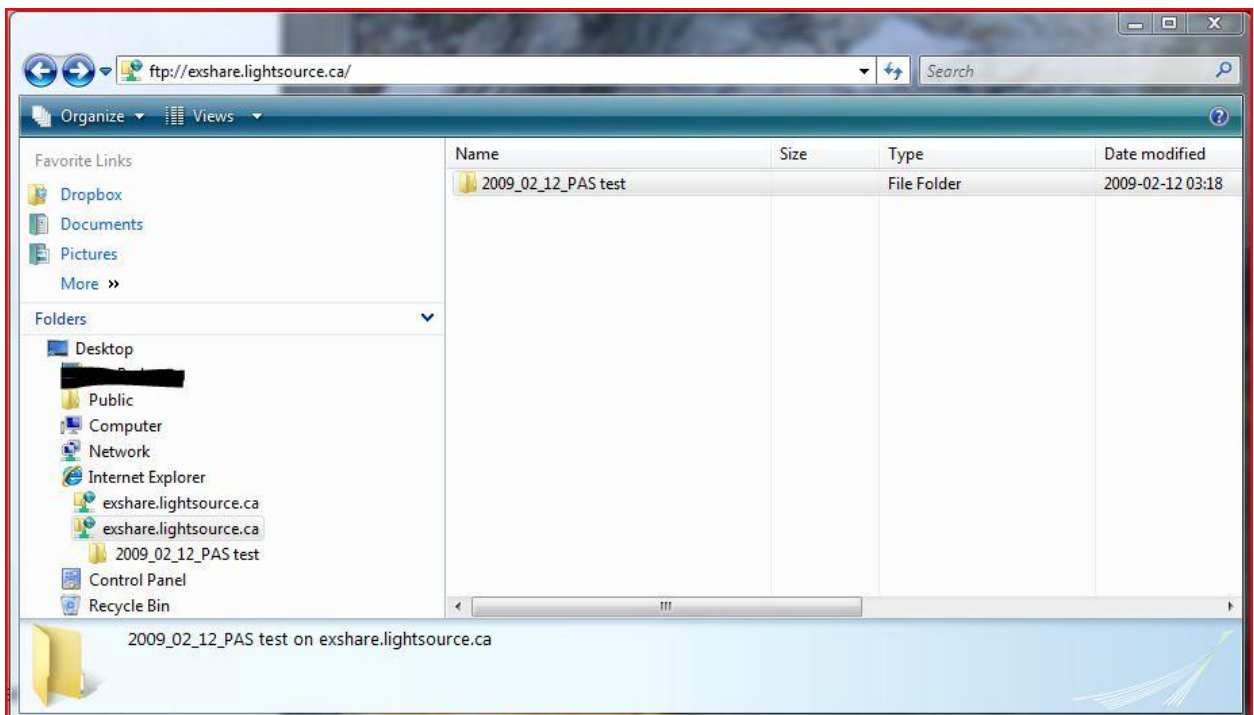
1. Open up Windows Explorer –  +  (Windows key + E).
2. In the address field type in: **ftp://exshare.lightsource.ca/** and hit the “Enter” key.



3. A dialogue box will pop up.



4. Type in your permit/experiment number **##-####@ex.clsi.ca** in the “**User name:**” field and your password in the “**Password:**” field.
5. Click the “**Log On**” button.
6. You should now be able to see your data in the folder structure created when you took your data.

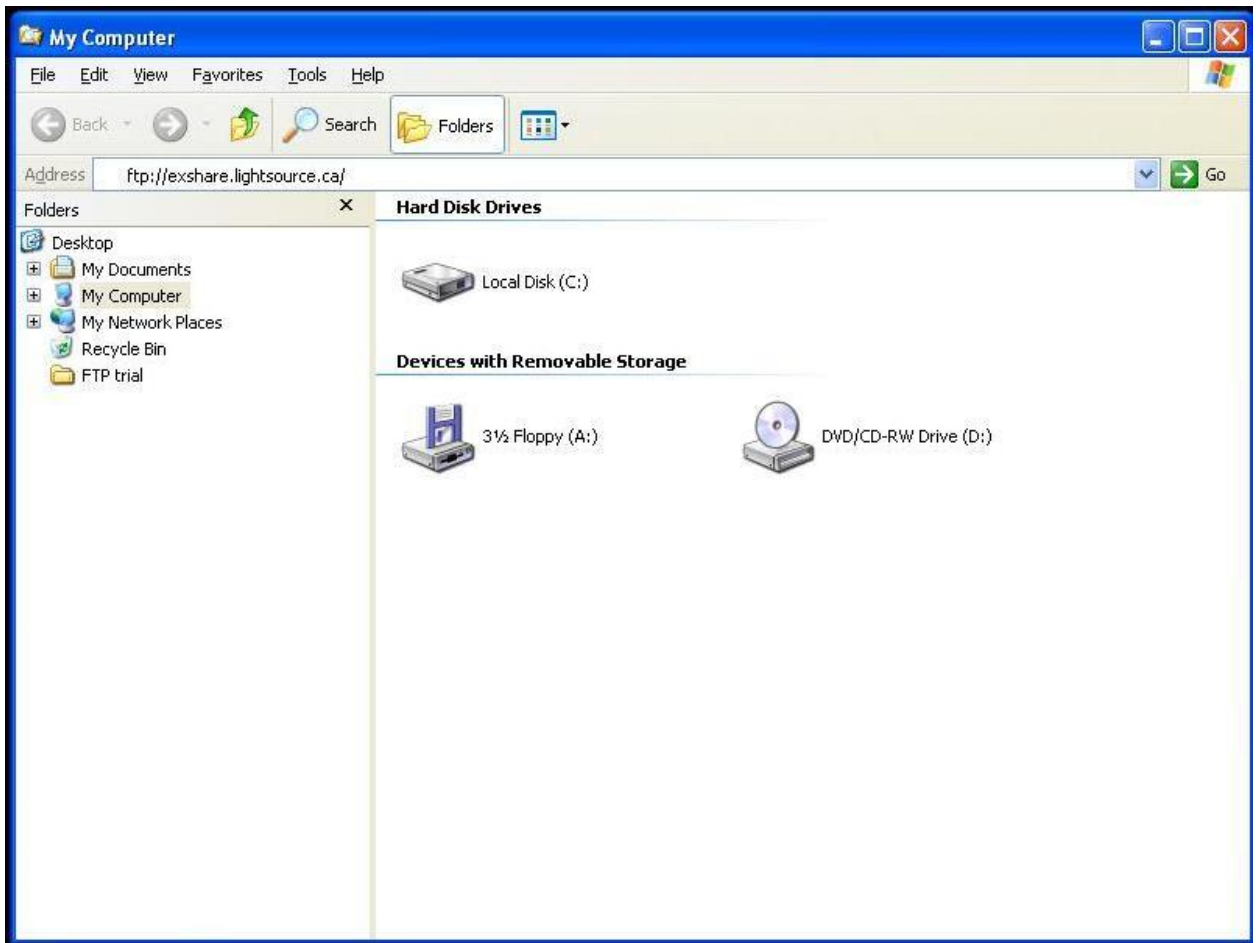


7. You can now copy your data over to your local computer, using “copy-and-paste” or “drag-and-drop”, etc...

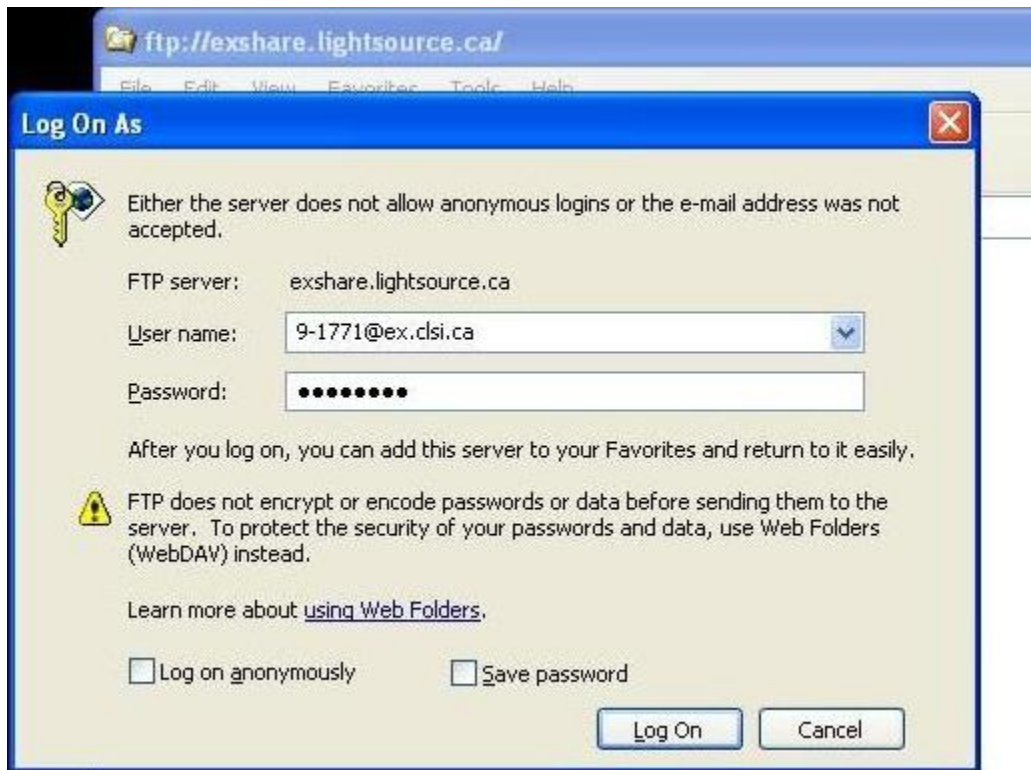
- An alternative method that works well with Windows is to use the freeware WinSCP program (<http://winscp.net/eng/index.php>). Another popular one is FileZilla (<http://filezilla-project.org/download.php>).

### Windows XP:

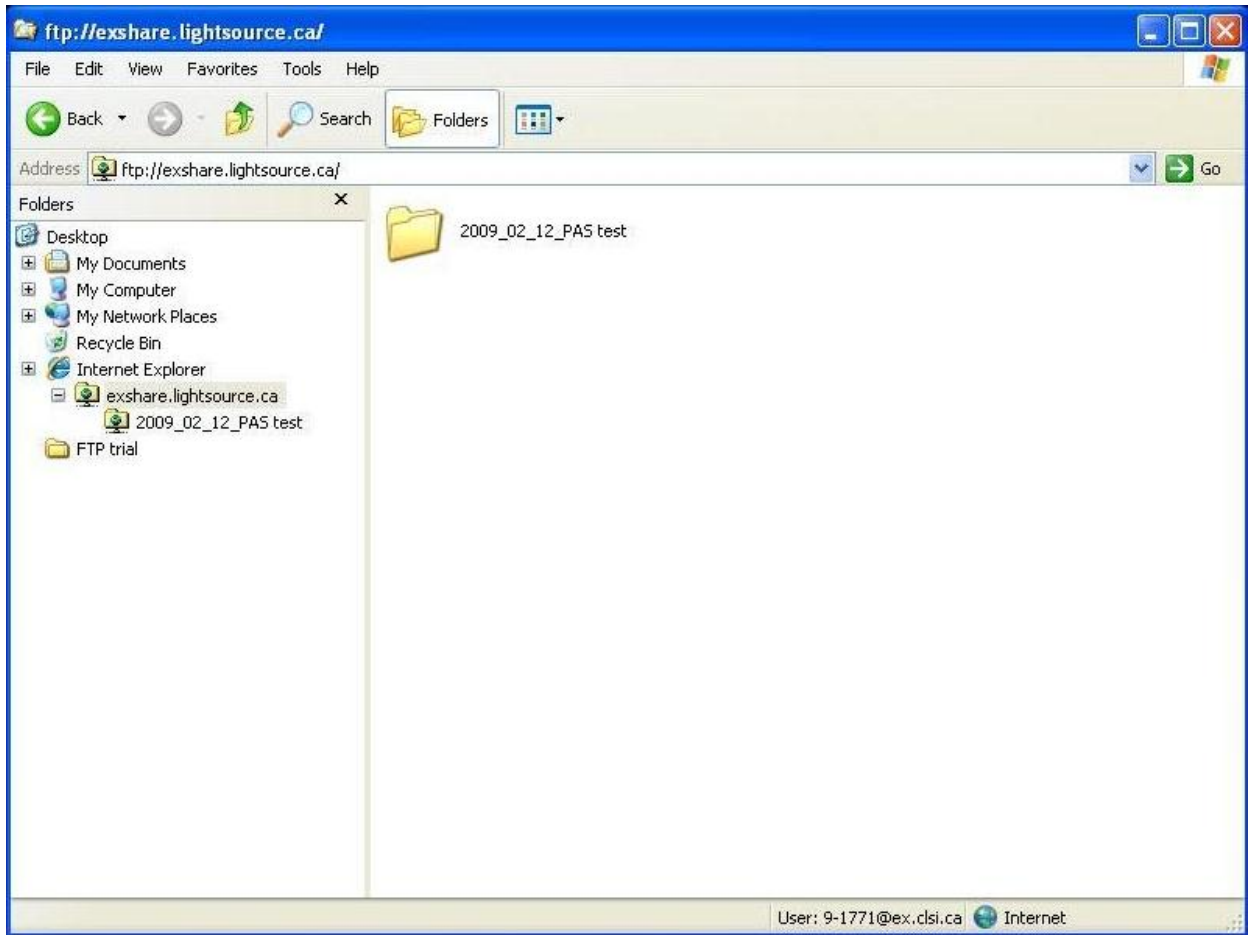
- Open up Windows Explorer –  +  (Windows key + E).
- In the address field type in: **ftp://exshare.lightsource.ca/** and hit the “Enter” key.



- A dialogue box will pop up.



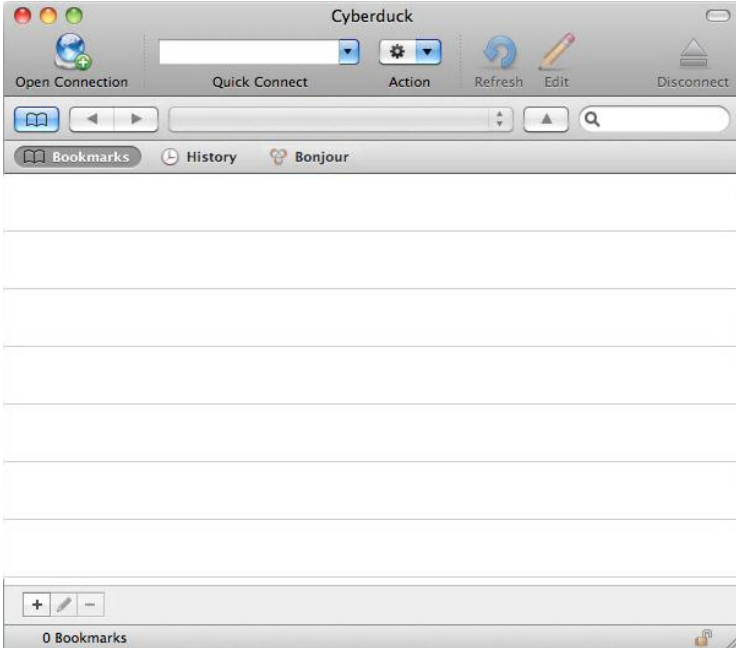
4. Type in your permit/experiment number **##-####@ex.clsi.ca** in the “**User name:**” field and your password in the “**Password:**” field.
5. Click the “**Log On**” button.
6. You should now be able to see your data in the folder structure created when you took your data.



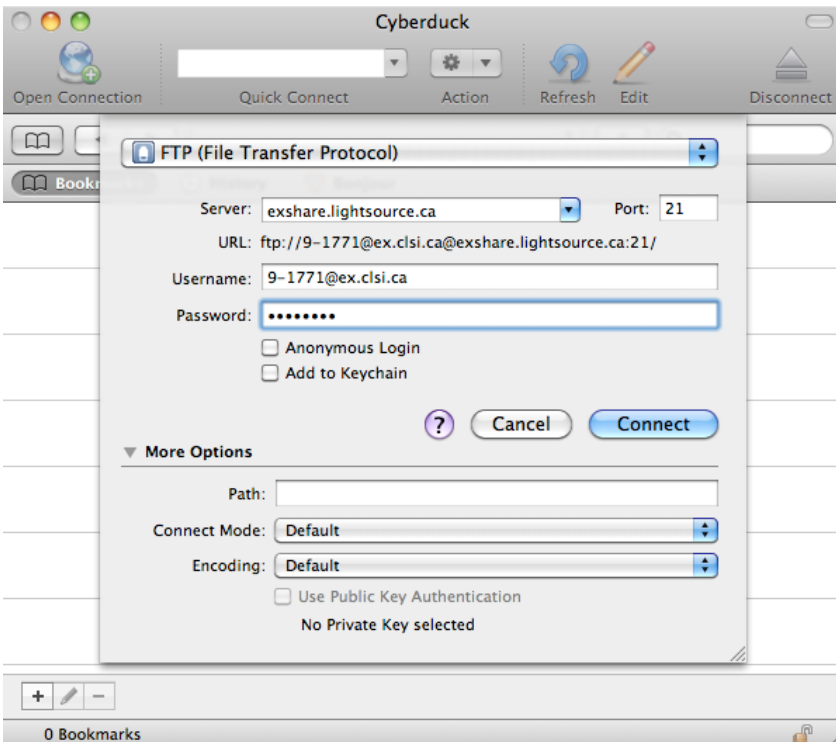
7. You can now copy your data over to your local computer, using “copy-and-paste” or “drag-and-drop”, etc...
8. An alternative method that works well with Windows is to use the freeware WinSCP program (<http://winscp.net/eng/index.php>). Another popular one is FileZilla (<http://filezilla-project.org/download.php>).



### Mac OS X 10.6 – Snow Leopard:

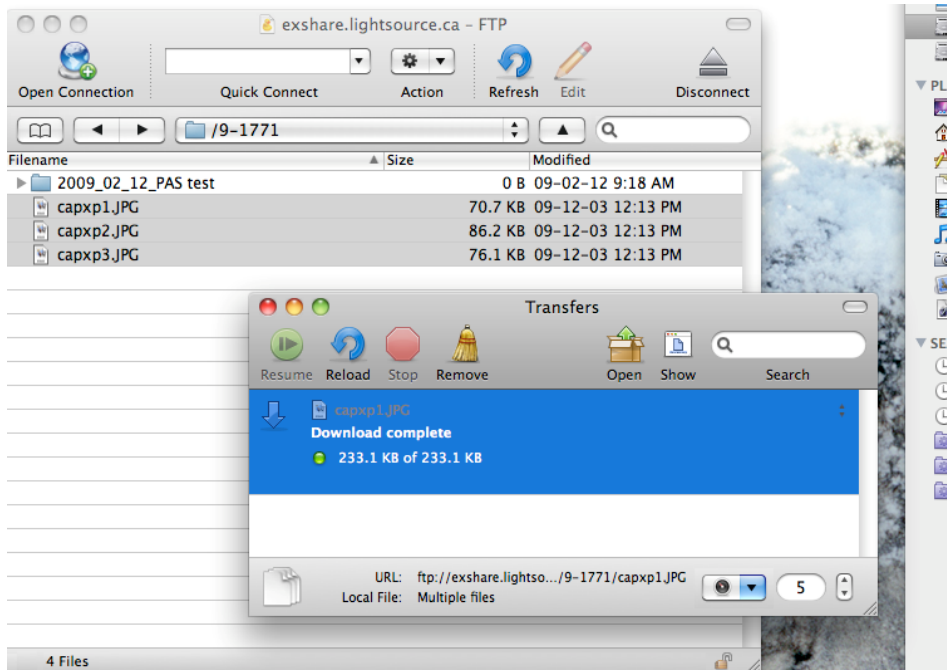
1. For Mac OS X the GUI Finder program can only access data as read-only (i.e. no uploading/deleting of data is possible). The better option is to use a third-party FTP program. A couple of freeware programs for Mac are Cyberduck (<http://cyberduck.ch/>) and FileZilla (<http://filezilla-project.org/download.php>). The instructions below are for Cyberduck.
2. Download and install Cyberduck.
3. Start Cyberduck and click on “Open Connection”



4. Type in **exshare.lightsource.ca** in the “**Server:**” field. Your permit/experiment number **##-####@ex.clsi.ca** in the “**Username:**” field and your password in the “**Password:**” field as shown below:



5. Click the “**Connect**” button.
6. You should now be able to see your files in Cyberduck with the folder structure created when you took your data.
7. You can now “drag-and-drop” your data to a Finder window –  +  (Command key + N).



8. A “Transfers” dialogue box will pop-up showing the status of the transfer.
9. Close Cyberduck or press the “Disconnect” button when finished.

### Linux\Solaris\BSD:

1. You probably know what to do already... some choices are: use the command line, use whatever built-in file browser your OS has, or download FileZilla (<http://filezilla-project.org/download.php>) or some other program using your OS’s package manager.